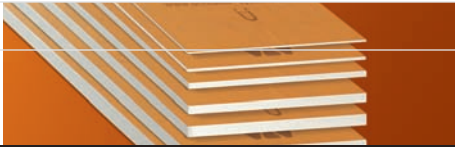




PROFILE OF INNOVATION

SCHLUTER®-KERDI-BOARD



SUBSTRATE

SUBSTRATE, BUILDING PANEL, BONDED WATERPROOFING

Application and Function



12.1 Schluter®-KERDI-BOARD

Schluter®-KERDI-BOARD is a multifunctional tile substrate and building panel, which can also be used for creating bonded waterproofing assemblies with tile coverings.

It consists of an extruded polystyrene foam panel, with a special reinforcement material on both sides and fleece webbing for effective anchoring in thin-set mortar.

With the available panel thicknesses of 3/16", 3/8", 1/2", 3/4", 1", 1-1/2", and 2" (5, 9, 12.5, 19, 25, 38, and 50 mm), KERDI-BOARD covers a broad range of application areas for creating flat, level, plumb, square, and dimensionally stable substrates for the installation of ceramic and natural stone tiles. With suitable preparation of the abutting seams and joint areas, the panel may be used for bonded waterproofing assemblies.

KERDI-BOARD is suitable for: creating tile substrates on masonry walls, wood or metal framing, and other finished wall surfaces; creating straight or curved partition walls; creating straight or curved bathtub and shower surrounds; concealing pipes and columns; as well as creating bathtub platforms, vanities, storage shelves, countertops, and various other bathroom structures.



The boards are simply cut to size with a utility knife. The gridlines, which are printed on the surface, are helpful for neat and quick cuts and installation.

KERDI-BOARD can be fully adhered in wall areas or spot-bonded with thin-set mortar. If necessary, the material may be secured with additional wall anchors. In the case of stud framing, KERDI-BOARD is attached with screws and washers from the matching hardware system.

Tiles can be installed directly over KERDI-BOARD using the thin-set method.

L-shaped and U-shaped KERDI-BOARD panels are available for creating pipe and column coverings, and grooved panels are available for creating curved elements. Schluter®-Systems also offers profiles and



attachment hardware for wall connections and finishing edges, as well as matching wall anchors and screws.

Material Properties and Areas of Application

Schluter®-KERDI-BOARD is made from extruded polystyrene foam, with a cement-free reinforcement layer laminated to both sides and an anchoring fleece webbing. The surface of the board has gridlines consisting of 3/8" x 3/8" (10 x 10 mm) squares printed on one side.

KERDI-BOARD is waterproof and vapor-retardant and can withstand all chemical stresses that typically occur in conjunction with ceramic tile coverings. KERDI-BOARD may be used in bonded waterproofing



assemblies where required.

Schluter®-KERDI-BOARD is completely flat and will not warp, even with one-sided exposure to temperature and moisture fluctuations. It will not rot or decay.

KERDI-BOARD can be used in a multitude of different application areas. In special cases, the suitability of the material must be verified based on the anticipated chemical and mechanical stresses. The information provided below is intended as general guidelines.

Structures on which KERDI-BOARD is to be installed must be stable and meet any other project-specific requirements.

Select a suitable material thickness if using KERDI-BOARD for the construction of freestanding partition walls, shelving, or similar structures, and use reinforcement profiles as necessary. Arrange supports made of KERDI-BOARD at regular intervals consistent with conventional building practices.

Select the material thickness and installation method depending on the evenness of the substrate. KERDI-BOARD can be spot-bonded to walls to correct substrate variations or fully embedded in thin-set mortar where walls are sufficiently even and plumb.

KERDI-BOARD should be stored flat. In case of outdoor storage, protect the material from direct sunlight and weather exposure.

Installation

Fully embedded KERDI-BOARD

Any board thickness suitable

1. Remove all surface contaminants from the substrate that may weaken the bond.
2. Apply thin-set mortar to the substrate and/or onto KERDI-BOARD with a notched trowel. The mortar must bond to the substrate and mechanically anchor the fleece on the KERDI-BOARD surface.
3. Apply the panels to the wall and firmly press them in place to ensure full

8.3 Schluter®-KERDI-BOARD

Property	Method	Value
Water vapor permeance	ASTM E96	0.48 perms - 1/2" (12.5 mm) 0.83 perms - 3/16" (5 mm)
Thermal resistance (R-value)	DIN EN 12667	R 8.1 - 2" (50 mm) R 2.0 - 1/2" (12.5 mm) R 0.8 - 3/16" (5 mm)
Service temperature range		-58 °F to 158 °F (-50 °C to 70 °C)
Flame spread/smoke developed	ASTM E84	Pass*

*Per International Building Code Requirements

- coverage.
4. Tightly abut the individual panels and align them appropriately.
 5. The tiles can be installed immediately using unmodified thin-set mortar. Choose a notched trowel to match the tile format, and back-butter the tiles, if necessary, to attain full coverage.

Note: If the bond between the thin-set mortar and substrate is questionable, additional mechanical attachment with the Schluter®-KERDI-BOARD-ZSD anchors or Schluter®-KERDI-BOARD-ZT washers and corresponding screws is required. Fasteners are installed after the thin-set mortar has hardened.

Note: See section "Waterproofing" on the use of KERDI-BOARD in bonded waterproofing assemblies.

Spot-bonded KERDI-BOARD

Minimum board thickness = 3/8" (9 mm)

1. Remove all surface contaminants from the substrate that may weaken the bond.
2. Place spots of thin-set mortar on the Schluter®-KERDI-BOARD panel or substrate in intervals of approx. 12" (30 cm). The mortar must bond to the substrate and mechanically anchor the fleece on the KERDI-BOARD surface.
3. Apply the panels to the wall, firmly press them in place, and align them with a straight-edge or level.
4. The tiles can be installed immediately using unmodified thin-set mortar. Choose a notched trowel to match the tile format, and back-butter the tiles, if necessary, to attain full coverage.

Note: : If the bond between the thin-set

mortar and substrate is questionable, additional mechanical attachment with the Schluter®-KERDI-BOARD-ZSD anchors or Schluter®-KERDI-BOARD-ZT washers and corresponding screws is required. Fastener locations must coincide with mortar spots. This may be ensured by making holes in the KERDI-BOARD at the desired fastener locations prior to applying mortar spots. Fasteners are installed after the thin-set mortar has hardened.

Note: See section "Waterproofing" on the use of KERDI-BOARD in bonded waterproofing assemblies.

Use of KERDI-BOARD on wood or metal framing

Minimum board thickness = 1/2" (12.5 mm) for studs spaced at 16" (40.6 cm) o.c.; 3/4" (19 mm) for studs spaced at 24" (61.0 cm) o.c.

1. Schluter®-KERDI-BOARD can be mounted vertically or horizontally on wood or metal framing with screws and corresponding Schluter®-KERDI-BOARD-ZT washers. Abut the individual panels over the center of the studs or other solid backing.
2. The selected screws must be of sufficient length to reach a depth of at least 3/4" (20 mm) in wood studs and at least 3/8" (10 mm) in metal studs. The maximum allowable on-center fastener spacing is 12" (30 cm). Screws may be placed between adjacent panels such that the washers fasten both panel edges.
3. The tiles can be installed immediately using unmodified thin-set mortar. Choose a notched trowel to match the tile format, and back-butter the tiles, if necessary, to attain full coverage.



Note: See section “Waterproofing” on the use of KERDI-BOARD in bonded waterproofing assemblies.

Use of KERDI-BOARD in non-bearing partition wall systems

Minimum board thickness = 2" (50 mm)

- Schluter®-KERDI-BOARD is adhered to the permanent wall in such a way as to provide lateral stability. This can be achieved by sandwiching the panel between adjacent KERDI-BOARD panels, fixed building elements, etc. As an alternative, the Schluter®-KERDI-BOARD-ZW angle profile or Schluter®-KERDI-BOARD-ZB U-shaped profile may be screw-mounted to the wall prior to partition installation.
- Open-ended partition walls can be further stabilized with the corresponding Schluter®-KERDI-BOARD-ZA/-ZB U-shaped profiles. If you plan to screw finishing hardware (e.g., shower door hinges) to the U-shaped profile, adhere the matching Schluter®-KERDI-BOARD-ZFP flat plastic profile to the back of the U-shaped profile to improve the fastening of the screws. U-shaped profiles may also be used for connections in the floor and ceiling areas.
- If multiple Schluter®-KERDI-BOARD panels are required to create the desired partition, the panels must be arranged horizontally with the joints sealed using thin-set mortar or Schluter®-KERDI-FIX adhesive. The Schluter®-KERDI-BOARD-ZW angle profile or Schluter®-KERDI-BOARD-ZB U-shaped profile may be included in the joints for improved stability.
- Such partition walls are not to be considered load-bearing structural walls. As a rule, use the 2" (50 mm) panels for these elements. Panels from a thickness of 3/4" (19 mm) may be used for building shelving. Again, this must be evaluated in accordance with the building specifications.
- The tiles can be installed using unmodified thin-set mortar once the bonding materials used to construct the partition have cured sufficiently to

stabilize the assembly. Choose a notched trowel to match the tile format, and back-butter the tiles, if necessary, to attain full coverage.

Note: See section “Waterproofing” on the use of Schluter®-KERDI-BOARD in bonded waterproofing assemblies.

Countertops made of KERDI-BOARD

Minimum board thickness = 1-1/2" (38 mm)

- Schluter®-KERDI-BOARD is adhered directly to base cabinets using the Schluter®-KERDI-FIX adhesive. All joints of KERDI-BOARD panels must be sealed with KERDI-FIX or thin-set mortar.
- The backsplash may consist of KERDI-BOARD or other appropriate tile substrate. Seal the countertop/backsplash transition with Schluter®-KERDI-BAND using unmodified thin-set mortar.
- Countertop edges may be finished with the Schluter®-KERDI-BOARD-ZC brushed stainless steel U-profile and corresponding Schluter®-QUADEC or Schluter®-RONDEC profiles, Schluter®-RONDEC-CT, or Schluter®-RONDEC-STEP profiles.
 - Apply KERDI-FIX to the inside vertical surface of the KERDI-BOARD-ZC profile and slide the profile over the edge of the KERDI-BOARD, pushing it tightly against the panel. The corresponding QUADEC or RONDEC profiles are installed with unmodified thin-set mortar in conjunction with the tile.
 - Schluter®-RONDEC-CT and Schluter®-RONDEC-STEP profiles are installed with unmodified thin-set mortar in conjunction with the tile.
- The countertop/backsplash transition may be finished with one of the Schluter®-DILEX cove-shaped profiles. Various materials and finishes are available to match the sink rail profiles above.
- Sinks may be mounted on top of the tile or tiled-under using Schluter®-RONDEC or Schluter®-QUADEC profiles and corresponding sink corners.
- The tiles can be installed immediately

using unmodified thin-set mortar. Choose a notched trowel to match the tile format, and back-butter the tiles, if necessary, to attain full coverage.

Note: Please refer to the Walls and Countertops Profiles data sheet for additional information on profiles, including installation instructions.

A bearing plate must be provided for fastening fixtures (e.g., faucet, soap dispenser, etc.) in tiled-under sink applications to distribute the pressure of the fixture hardware on the underside of the assembly. This may be performed by routing a section from the top of the KERDI-BOARD in the area where the fixtures are to be placed. Apply a corresponding piece of ceramic tile with thin-set mortar in the resulting space flush with the surface of the KERDI-BOARD. In general, it is recommended that the tile be at least 5/16" (8 mm) -thick and extend approximately 1-1/2" (38 mm) beyond the fixture hardware on all sides. Once the countertop is tiled and grouted, holes may be drilled through the assembly to fit the fixture-mounting studs. Additional material may be removed from the underside of the KERDI-BOARD to allow installation of the fixture hardware.

Pipe and column coverings made of KERDI-BOARD

- The Schluter®-KERDI-BOARD-E/-U L-shaped and U-shaped panels allow for quick and easy covering of pipes and columns.
- The panels feature V-shaped grooves. They are supplied flat, which makes them easy to cut to the required size.
- Apply thin-set mortar, Schluter®-KERDI-FIX adhesive, or the Schluter®-KERDI-BOARD-ZDK double-sided adhesive tape to the V-shaped grooves. Fold the panels prior to installation.
- Adhere the edges of the L-shaped or U-shaped panels to the existing walls using either thin-set mortar or KERDI-FIX. If required, mount the Schluter®-KERDI-BOARD-ZW angle profile on the wall area first for reinforcement.



5. The tiles can be installed immediately using unmodified thin-set mortar. Choose a notched trowel to match the tile format, and back-butter the tiles, if necessary, to attain full coverage.

Note: As an alternative, you can also cut a single U-shaped panel into two L-shaped panels with shorter legs.

Note: See section “Waterproofing” on the use of KERDI-BOARD in bonded waterproofing assemblies.

Curved wall areas made of KERDI-BOARD

1. The Schluter®-KERDI-BOARD-V panels feature grooves to allow for quick and easy creation of curved elements.
2. First, cut the panels to the required size. If a larger expanse of panels is required, several panels can be connected along the edges with thin-set mortar, Schluter®-KERDI-FIX adhesive, or the Schluter®-KERDI-BOARD-ZDK double-sided adhesive tape.
3. If the grooved surface points toward the inside, it is recommended that the grooves be filled with thin-set mortar prior to panel installation.
4. Outward-facing grooves should be filled with thin-set mortar prior to or during the tile installation.

5. The tiles can be installed using unmodified thin-set mortar once the bonding materials used to construct the element have cured sufficiently to stabilize the assembly. Choose a notched trowel to match the tile format, and back-butter the tiles, if necessary, to attain full coverage

Note: See section “Waterproofing” on the use of KERDI-BOARD in bonded waterproofing assemblies.

Waterproofing with KERDI-BOARD

Where waterproofing is desired, the joints and corners of Schluter®-KERDI-BOARD in the area must be sealed with Schluter®-KERDI-BAND using unmodified thin-set mortar. The KERDI-BAND must overlap panel joints by at least 2" (50 mm).

KERDI-BAND is also suitable for sealing connections to fixed building elements such as door and window frames. Where these surfaces will not accept a bond to unmodified thin-set mortar, use Schluter®-KERDI-FIX to bond KERDI-BAND.

Separate KERDI-BOARD above the existing movement joints and structural joints and cover the joints with Schluter®-KERDI-FLEX using unmodified thin-set mortar, ensuring a minimum 2" (50 mm) overlap.

Fastener penetrations may be sealed with KERDI-BAND using unmodified thin-set mortar.

Please refer to the Schluter®-Shower System Installation Handbook for guidelines on waterproofing showers, steam showers, and tub surrounds.

Note: Certain glass tiles may not be compatible with bonded waterproofing applications and/or may require special setting materials. Consult glass tile manufacturer and Schluter®-Systems for more information.

Certain moisture-sensitive stones, e.g., green marble, or resin-backed tiles may not be appropriate for use in wet areas or may require special setting materials. Consult stone supplier and Schluter®-Systems for more information.

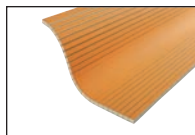
If installing bathroom fixtures such as grab bars in showers, wall-mounted toilets, or other heavy objects, the fixtures must be anchored in the structure or solid blocking behind KERDI-BOARD.

Note: Reinforcement may be required behind the entire footprint of the object. For example, place solid blocking behind the base of a wall-mounted toilet installed over KERDI-BOARD on stud framing.

Product Item Numbers

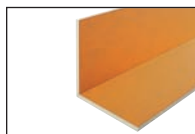


Schluter®-KERDI-BOARD			
Item No.	Width	Length	Thickness
KB512201625	48" – 122 cm	64" – 162.5 cm	3/16" – 5 mm
KB912201625	48" – 122 cm	64" – 162.5 cm	3/8" – 9 mm
KB1212201625	48" – 122 cm	64" – 162.5 cm	1/2" – 12.5 mm
KB512202440	48" – 122 cm	96" – 244 cm	3/16" – 5 mm
KB912202440	48" – 122 cm	96" – 244 cm	3/8" – 9 mm
KB1212202440	48" – 122 cm	96" – 244 cm	1/2" – 12.5 mm
KB196252440	24-1/2" – 62.5 cm	96" – 244 cm	3/4" – 19 mm
KB256252440	24-1/2" – 62.5 cm	96" – 244 cm	1" – 25 mm
KB386252440	24-1/2" – 62.5 cm	96" – 244 cm	1-1/2" – 38 mm
KB506252440	24-1/2" – 62.5 cm	96" – 244 cm	2" – 50 mm



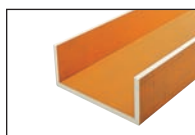
Schluter®-KERDI-BOARD-V

Item No.	Width	Length	Thickness
KB96252440V	24-1/2" – 62.5 cm	96" – 244 cm	3/8" – 9 mm
KB126252440V	24-1/2" – 62.5 cm	96" – 244 cm	1/2" – 12.5 mm
KB196252440V	24-1/2" – 62.5 cm	96" – 244 cm	3/4" – 19 mm
KB256252440V	24-1/2" – 62.5 cm	96" – 244 cm	1" – 25 mm
KB386252440V	24-1/2" – 62.5 cm	96" – 244 cm	1-1/2" – 38 mm
KB506252440V	24-1/2" – 62.5 cm	96" – 244 cm	2" – 50 mm



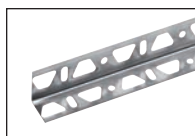
Schluter®-KERDI-BOARD-E

Item No.	Width	Length	Thickness
KB126252440E	24-1/2" – 62.5 cm	96" – 244 cm	1/2" – 12.5 mm
KB196252440E	24-1/2" – 62.5 cm	96" – 244 cm	3/4" – 19 mm
KB256252440E	24-1/2" – 62.5 cm	96" – 244 cm	1" – 25 mm



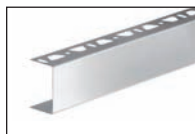
Schluter®-KERDI-BOARD-U

Item No.	Width	Length	Thickness
KB196252440U20	8-1/4" x 7-7/8" x 8-1/4" = 24-1/2" — 21 x 20 x 21 cm = 62 cm	96" – 244 cm	3/4" – 19 mm
KB196252440U30	6-5/16" x 11-13/16" x 6-5/16" = 24-1/2" — 16 x 30 x 16 cm = 62 cm	96" – 244 cm	3/4" – 19 mm



Schluter®-KERDI-BOARD-ZW

Item No.	Description
Length supplied: 6" — 15 cm	
KBZW30E/15	Stainless steel angle profile
Length supplied: 8' 2-1/2" — 2.50 m	
KBZW30E	Stainless steel angle profile



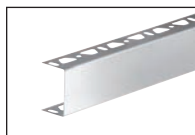
Schluter®-KERDI-BOARD-ZC

Item No.	Description	Size
Length supplied: 8' 2-1/2" — 2.50 m		
KBZC38EB	U-shaped brushed stainless steel profile with 1 perforated anchoring leg	1-1/2" – 38 mm
KBZC50EB	U-shaped brushed stainless steel profile with 1 perforated anchoring leg	2" – 50 mm



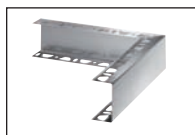
Schluter®-KERDI-BOARD-ZC/E

Item No.	Description	Size
E/KBZC38EB	Brushed stainless steel outside corner piece for ZC	1-1/2" – 38 mm
E/KBZC50EB	Brushed stainless steel outside corner piece for ZC	2" – 50 mm



Schluter®-KERDI-BOARD-ZA

Item No.	Description	Size
Length supplied: 8' 2-1/2" — 2.50 m		
KBZA19EB	U-shaped brushed stainless steel profile with 2 perforated anchoring legs	3/4" – 19 mm
KBZA25EB	U-shaped brushed stainless steel profile with 2 perforated anchoring legs	1" – 25 mm
KBZA38EB	U-shaped brushed stainless steel profile with 2 perforated anchoring legs	1-1/2" – 38 mm
KBZA50EB	U-shaped brushed stainless steel profile with 2 perforated anchoring legs	2" – 50 mm



Schluter®-KERDI-BOARD-ZA/E

Item No.	Description	Size
E/KBZA38EB	Brushed stainless steel outside corner piece for ZA	1-1/2" – 38 mm
E/KBZA50EB	Brushed stainless steel outside corner piece for ZA	2" – 50 mm



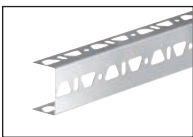
Schluter®-KERDI-BOARD-Z/V

Item No.	Description	Size
V/KBZ19EB	Brushed stainless steel connector for ZC and ZA	3/4" – 19 mm
V/KBZ25EB	Brushed stainless steel connector for ZC and ZA	1" – 25 mm
V/KBZ38EB	Brushed stainless steel connector for ZC and ZA	1-1/2" – 38 mm
V/KBZ50EB	Brushed stainless steel connector for ZC and ZA	2" – 50 mm



Schluter®-KERDI-BOARD-ZI/V

Item No.	Description	Size
V/KBZI19E	Stainless steel internal connector for ZC and ZA	3/4" – 19 mm
V/KBZI25E	Stainless steel internal connector for ZC and ZA	1" – 25 mm
V/KBZI38E	Stainless steel internal connector for ZC and ZA	1-1/2" – 38 mm
V/KBZI50E	Stainless steel internal connector for ZC and ZA	2" – 50 mm



Schluter®-KERDI-BOARD-ZB

Item No.	Description	Size
Length supplied: 8' 2-1/2" — 2.50 m		
KBZB19E	U-shaped stainless steel profile with 3 perforated anchoring legs	3/4" – 19 mm
KBZB25E	U-shaped stainless steel profile with 3 perforated anchoring legs	1" – 25 mm
KBZB38E	U-shaped stainless steel profile with 3 perforated anchoring legs	1-1/2" – 38 mm
KBZB50E	U-shaped stainless steel profile with 3 perforated anchoring legs	2" – 50 mm



Schluter®-KERDI-BOARD-ZSD

Item No.	Description	Length	Packaging
KBZSD90E	Stainless steel anchor	3-1/2" – 9 cm	25 anchors/box
KBZSD110E	Stainless steel anchor	4-5/16" – 11 cm	25 anchors/box
KBZSD90Z	Galvanized steel anchor	3-1/2" – 9 cm	25 anchors/box
KBZSD110Z	Galvanized steel anchor	4-5/16" – 11 cm	25 anchors/box



Schluter®-KERDI-BOARD-ZT

Item No.	Description	Size	Packaging
KBZT32Z	Galvanized steel attachment washers	1-1/4" – 32 mm	100 washers/box



Schluter®-KERDI-BOARD-ZDK

Item No.	Description	Size
KBZDK12/10M	Double-sided tape	1/2" x 33' – 12.5 mm x 10 m
KBZDK19/10M	Double-sided tape	3/4" x 33' – 19 mm x 10 m
KBZDK30/10M	Double-sided tape	1-3/16" x 33' – 30 mm x 10 m



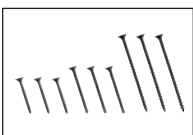
Schluter®-KERDI-BOARD-ZSA

Item No.	Description	Size
KBZSA100/45M	Joint reinforcement tape	4" x 148' – 100 mm x 45 m



Schluter®-KERDI-BOARD-ZFP

Item No.	Description	Size
KBZFP35	Flat plastic profile	1-3/8" x 8' – 35 mm x 2.5 m



Schluter®-KERDI-BOARD-ZS

Item No.	Description	Size	Packaging
KBZS35G	Course thread screw for wood framing	1-5/8" – 41 mm	200 screws/box
KBZS55G	Course thread screw for wood framing	2" – 50 mm	100 screws/box
KBZS75G	Course thread screw for wood framing	3" – 75 mm	100 screws/box



8.1 Schluter®-KERDI-BAND (waterproofing strips)

Item No.	Width	Length	Thickness
KEBA 100/125/5M	5" - 12.5 cm	16' 5" - 5 m	4 mil
KEBA 100/125/10M	5" - 12.5 cm	33' - 10 m	4 mil
KEBA 100/185/5M	7-1/4" - 18.5 cm	16' 5" - 5 m	4 mil
KEBA 100/250/5M	10" - 25 cm	16' 5" - 5 m	4 mil
KEBA 100/125	5" - 12.5 cm	98' 5" - 30 m	4 mil
KEBA 100/185	7-1/4" - 18.5 cm	98' 5" - 30 m	4 mil
KEBA 100/250	10" - 25 cm	98' 5" - 30 m	4 mil



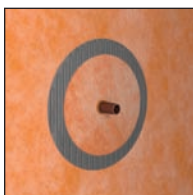
8.1 Schluter®-KERDI-FLEX (waterproofing strips for use above movement joints)

Item No.	Width	Length	Thickness
FLEX 125/5M	5" - 12.5 cm	16' 5" - 5 m	12 mil
FLEX 250/5M	10" - 25 cm	16' 5" - 5 m	12 mil
FLEX 125/30	5" - 12.5 cm	98' 5" - 30 m	12 mil
FLEX 250/30	10" - 25 cm	98' 5" - 30 m	12 mil



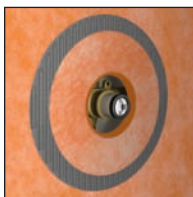
8.1 Schluter®-KERDI-KERECK-F (pre-formed corners)

Item No.	Thickness	Packaging
KERECK / FI 2	4 mil	2 Inside corners
KERECK / FI 10	4 mil	10 Inside corners
KERECK / FA 2	4 mil	2 Outside corners
KERECK / FA 10	4 mil	10 Outside corners



8.1 Schluter®-KERDI-SEAL-PS (pipe seal with over-molded rubber gasket)

Item No.	Pipe nipple opening diam.	Thickness	Packaging
KMS185/12	1/2" - 12.5 mm	4 mil	1 unit
KMS185/20	3/4" - 20 mm	4 mil	1 unit
KMS10185/12	1/2" - 12.5 mm	4 mil	10 units
KMS10185/20	3/4" - 20 mm	4 mil	10 units



8.1 Schluter®-KERDI-SEAL-MV (mixing valve seal with over-molded rubber gasket)



Item No.	Mixing valve opening diam.	Thickness	Packaging
KMSMV235/114	4-1/2" - 114 mm	4 mil	1 unit
KMSMV10235/114	4-1/2" - 114 mm	4 mil	10 units



8.3 Schluter®-KERDI-FIX (adhesive/sealant)

Item No.	Cartridge Volume
KERDIFIX / <i>color</i> *	9.81 oz (290 ml)

***Color Codes**

To complete the item number, add the *color* code (e.g., KERDIFIX / *BW*).



PROFILE OF INNOVATION

Schluter Systems L.P. 194 Pleasant Ridge Road, Plattsburgh, NY 12901-5841 Tel.: 1-800-472-4588 • Fax: 1-800-477-9783 e-mail: info@schluter.com	Schluter Systems (Canada) Inc. 21100 Chemin Ste-Marie, Ste-Anne-de-Bellevue, QC, H9X 3Y8 Tel.: 1-800-667-8746 • Fax: 1-877-667-2410 e-mail: info@schluter.com
--	---

www.schluter.com